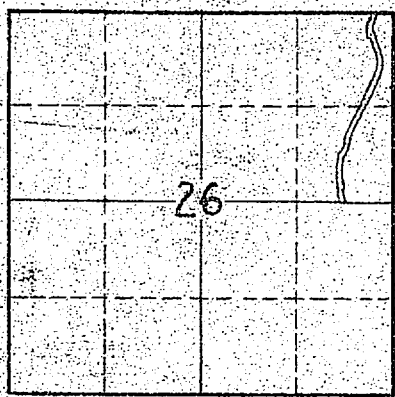
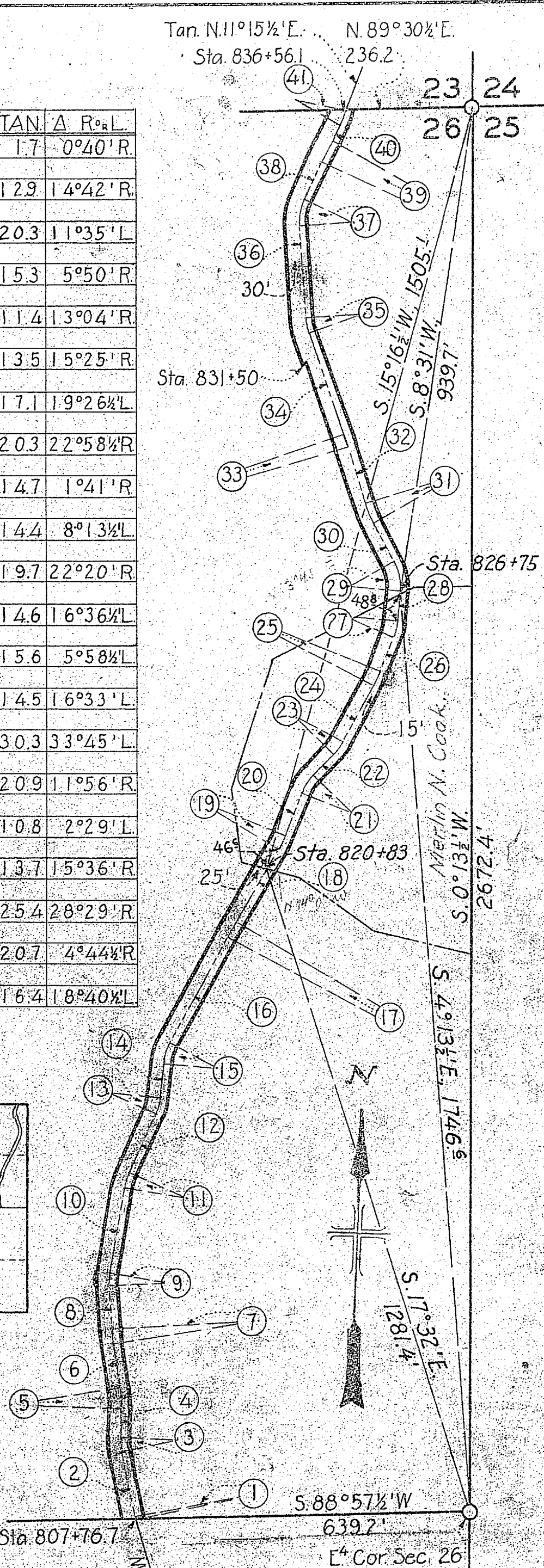


N <sup>o</sup>	COURSE	LENGTH	RAD.	TAN.	Δ R <sub>or</sub> L.
1.		3.5	300.0	1.7	0°40'R.
2.	N. 12°13' W.	126.3			
3.		25.6	100.0	1.29	14°42'R.
4.	N. 2°29' W.	56.7			
5.		40.4	200.0	20.3	11°35'L.
6.	N. 9°06' W.	83.7			
7.		30.5	300.0	15.3	5°50'R.
8.	N. 3°16' W.	78.6			
9.		22.8	100.0	11.4	13°04'R.
10.	N. 9°48' E.	168.7			
11.		26.9	100.0	13.5	15°25'R.
12.	N. 25°13' E.	125.7			
13.		33.9	100.0	17.1	19°26½'L.
14.	N. 5°46½'E.	65.7			
15.		40.1	100.0	20.3	22°58½'R.
16.	N. 28°45' E.	232.0			
17.		29.4	100.0	14.7	1°41'R.
18.	N. 30°26' E.	162.4			
19.		28.7	200.0	14.4	8°13½'L.
20.	N. 22°12½'E.	86.4			
21.		38.7	100.0	19.7	22°20'R.
22.	N. 44°32½'E.	58.4			
23.		29.0	100.0	14.6	16°36½'L.
24.	N. 27°56' E.	119.9			
25.		31.2	300.0	15.6	5°58½'L.
26.	N. 21°57½'E.	75.4			
27.		28.9	100.0	14.5	16°33'L.
28.	N. 5°24½'E.	54.7			
29.		58.9	100.0	30.3	33°45'L.
30.	N. 28°20½'W.	84.3			
31.		41.6	200.0	20.9	11°56'R.
32.	N. 16°24½'W.	111.5			
33.		21.6	500.0	10.8	2°29'L.
34.	N. 18°53½'W.	211.4			
35.		27.2	100.0	13.7	15°36'R.
36.	N. 3°17½'W.	179.1			
37.		49.8	100.0	25.4	28°29'R.
38.	N. 25°11½'E.	81.7			
39.		41.3	500.0	20.7	4°44½'R.
40.	N. 29°56' E.	34.2			
41.		32.6	100.0	16.4	18°40½'L.



KEY MAP



S. N. COOK  
 A part of E<sup>2</sup>NE<sup>4</sup> Sec. 26  
 T. 8 N., R. 2 W., S. L. M.  
 Total 270 Acres

Rev. Mar. 26, 1936

DEPARTMENT OF THE INTERIOR  
 BUREAU OF RECLAMATION  
 OGDEN RIVER PROJECT-UTAH  
 RIGHTS OF WAY  
 OGDEN BRIGHAM CANAL

DRAWN: C.M.A. SUBMITTED: \_\_\_\_\_  
 TRACED: F.W.R. RECOMMENDED: \_\_\_\_\_  
 CHECKED: R.F.P. APPROVED: \_\_\_\_\_

41-D-173 Ogden, Utah 1-31-35

Scale 1 in = 200 ft